

System Enhancements

Intelligence You Can Trade On

Free Floating Windows Maximize your view of the Market

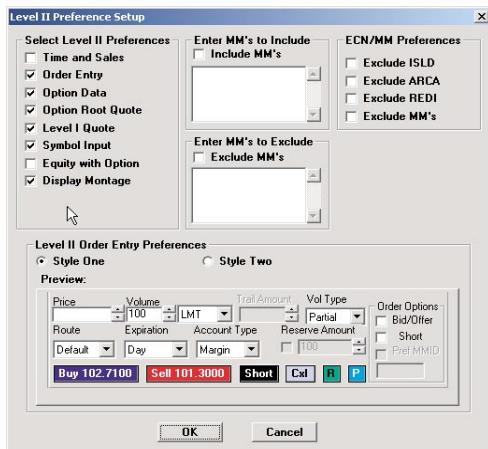
The screenshot displays a trading workstation with several windows open:

- NasdaqII, DELL Dell Computer Corporation:** A window showing a list of stock orders with columns for MMID, Bid, Size, MMID, Ask, and Size. The top row shows REDI with a bid of 26.2000 and size of 1, and an ask of 26.2900 and size of 1.
- Order Details-501:** A window showing order details for a specific order, including columns for Symbol, Action, Type, Price, Shares, Pending, Executed, Status, Route, Pref, and Trail/Stp.
- Pending Orders-501:** A window showing a list of pending orders with columns for OrderNo, Symbol, Action, Type, Price, Shares, Pending, Executed, Status, Route, Pref, and Trail/Stp.
- CNN Money - Microsoft Internet Explorer:** A browser window displaying the CNN Money website. The main headline is "The Terrorist Investigation From Every Angle" with a sub-headline "Relief: Helping.org In-Depth: The New War Looking for the best? Track your stocks".
- Chart-COMPX 1 Min:** A 1-minute line chart for the COMPX index, showing price movement from 15:00 to 16:40. The current price is 1837.53.
- Chart-DELL 60 Min Dell Computer Corporation:** A 60-minute line chart for DELL stock, showing price movement from 08:00 to 11:06. The current price is 26.2500.
- Chart-DELL 60 Min Dell Computer Corporation:** A 60-minute line chart for DELL stock, showing price movement from 10:17 to 11:06. The current price is 26.2500.

Create custom layouts outside of the parent application
Create layouts that integrate various applications
Maximize your trading workspace
Trade across monitors with ease

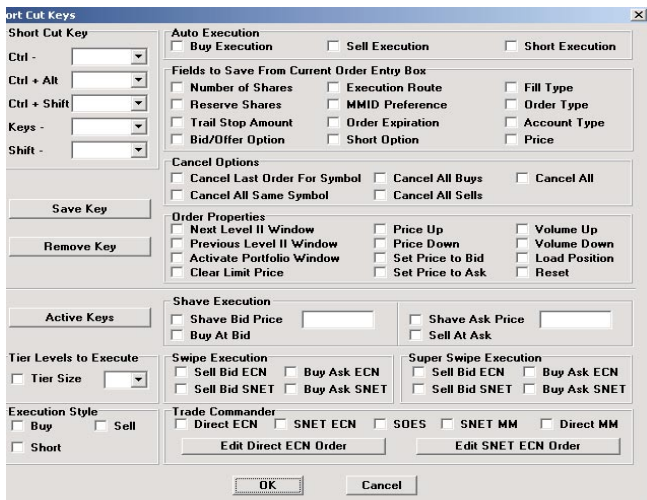
System Enhancements

Intelligence You Can Trade On



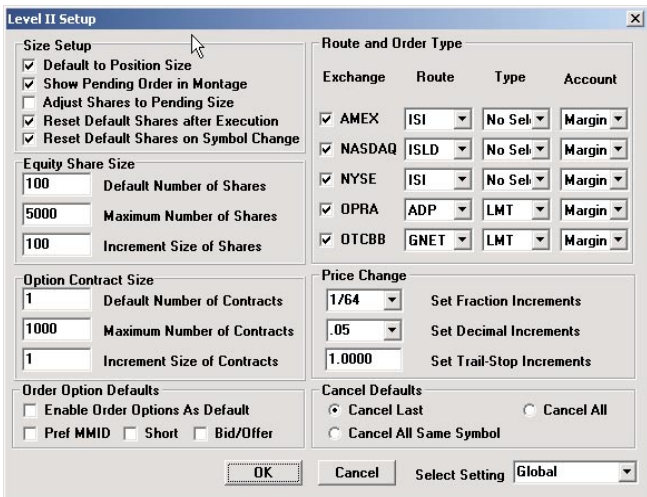
Level II Preferences

Inclusion/Exclusion of Market Makers
 ECN/Market Maker Preferences
 Choose from four styles of Level II Windows
 New Short Button New Reset Button
 New Cancel Button New Position Button



New Hot Keys

Hot Key Map
 Shave Keys
 Cancellations
 Clearing of Price Field
 Navigation
 Swipes
 Reset Key
 Position Key
 Setting Price
 Super Swipes
 Trade Commander



New Level II Setup Options

Default shares to Position
 Show Pending Orders in Level II Montage
 Adjust Shares to Pending Size
 Reset Default Shares Upon Execution
 Reset Default Shares Upon Symbol Change

System Enhancements

Intelligence You Can Trade On

Level II Preferences

Inclusion/Exclusion of Market Makers - Include and Exclude Market Makers and ECNs to provide a clearer view to the market that you want.

Choose your style - Get the ability to change your Level II Window from one format to another with a click of your mouse. Simply choose the format which appeals to you most and start trading with your own style.

Short Button - Simplify your shorting by using the special Short button which will allow you to short either stocks or equities with ease.

Cancel Button - Cancel unwanted orders by using the customizable Cancel button. You can define which orders will be canceled by setting your cancellation action in the Trade Defaults Window.

Reset Button - Reset all of your trading defaults with one click of the mouse.

Position Button - Populate your existing positions into the volume field for more efficient order management.

New Hot Keys

Active Hot Key Map - This feature creates a listing of those hot keys that you have assigned.

Shave Keys - Submit orders with one key that are an increment inside the Best Bid or Best Offer.

Cancellations - Create Hot Keys that can cancel orders in numerous ways. You may assign keys to cancel all orders, cancel all buy or sell orders, cancel last and cancel all orders for the same symbol.

Clearing of Price Field - Specify a key that clears the Price Field with one keystroke.

Navigation - Navigate between Level II Windows and your Portfolio Window with hot keys to decrease order entry time.

Swipes & Super Swipes - Send orders to the market enabling you to buy or sell through specified price tiers. You may specify the number of shares that you want to buy or sell, or you may choose to swipe all of the shares outstanding for price tiers you specify.

Reset Key - Specify a key to reset all of your trading defaults.

Position Key - Assign a key to populate your position into the volume field for more efficient order entry.

Set Price Keys - You may use the Set Price to Bid or the Set Price to Offer key to populate the price field with one keystroke.

Trade Commander - Create an Auto-Route to send orders on a predetermined path for ease of execution.

New Level II Setup Options

Default to Position - Set your Level II Window to show your position in the volume field for an equity or option when viewing quotes for that stock in the Level II Montage.

Show Pending Orders - Display and keep track of your orders in the Level II Montage.

Adjust Shares - Watch your shares dynamically adjust to your position as your order is worked in the market.

Reset Default Shares - You may also reset your volume field to your default number of shares upon execution or upon symbol change.